

人小细胞肺癌细胞 NCI-H146 [H146] 说明书

目录号: SCSP-5075

细胞名称: NCI-H146 [H146]

细胞描述: 细胞表达相对大量的 c-myc mRNA, 但 c-myc DNA 序列不扩增。

表达 c-myb, v-fms, Ha-ras, Ki-ras, N-ras, c-raf 1 mRNAs。该细胞高表达四种生化标记物: 神经元特异性烯醇酶(neuron specific enolase)、肌酸激酶的脑同工酶(brain isoenzyme of creatine kinase)、L-DOPA 脱羧酶(L-DOPA decarboxylase)和类蛙皮素免疫活性(bombesin-like immunoreactivity)。

物种: 白人, 男性, 59 岁

组织: 肺; 来源于转移灶: 骨髓

细胞来源: 2021 年引进

生物安全等级: BSL-1

完全培养液配方: 见下方备注。

批次/冻存日期: 详见 冻存管/培养瓶 标识

参考传代比例: 1:2-1:3

参考传代周期: 4-6 天

参考换液频率: 每 2-3 天换 1 次液

冻存液配方: 完全培养液 95%, DMSO 5%

细胞形态: 悬浮, 多个细胞聚团

支原体检测结果: 阴性

STR 鉴定结果:

Amelogenin: X, X

CSF1PO: 11,12

D13S317: 11,12

D16S539: 11,11

D5S818: 12,12

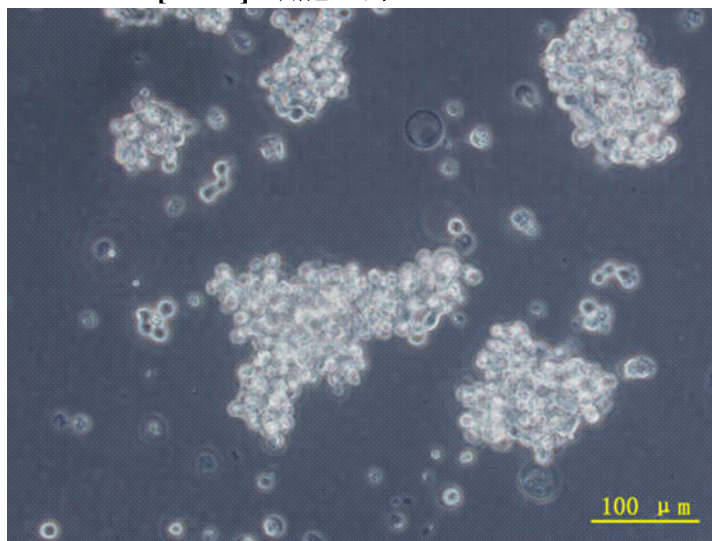
D7S820: 9,10

TH01: 6,9.3

TPOX: 8,11

vWA: 14,16

NCI-H146 [H146] 细胞照片



参考文献:

- Banks-Schlegel SP, et al. Intermediate filament and cross-linked envelope expression in human lung tumor cell lines. *Cancer Res.* 45: 1187-1197, 1985. PubMed: 2578876
- Bepler G, et al. Expression of p64c-myc and neuroendocrine properties define three subclasses of small cell lung cancer. *Oncogene* 4: 45-50, 1989. PubMed: 2536917
- Schardt C, et al. Characterization of insulin-like growth factor II receptors in human small cell lung cancer cell lines. *Exp. Cell Res.* 204: 22-29, 1993. PubMed: 8380141
- Carney DN, et al. Establishment and identification of small cell lung cancer cell lines having classic and variant features. *Cancer Res.* 45: 2913-2923, 1985. PubMed: 2985257
- Kiefer PE, et al. Amplification and expression of protooncogenes in human small cell lung cancer cell lines. *Cancer Res.* 47: 6236-6242, 1987. PubMed: 2824028
- Hensel CH, et al. Altered structure and expression of the human retinoblastoma susceptibility gene in small cell lung cancer. *Cancer Res.* 50: 3067-3072, 1990. PubMed: 2159370
- Verbeeck MA, et al. Expression of the vasopressin and gastrin-releasing peptide genes in small cell lung carcinoma cell lines. *Pathobiology* 60: 136-142, 1992. PubMed: 1320893
- Lung Cancer* 4: 155-161, 1988.
- The NCI-H146 cell line was derived by A.F. Gazdar and associates in 1979 from a bone marrow metastasis of a patient with small cell cancer of the lung. The bone marrow specimen was taken prior to therapy.
- The cells form transplantable tumors which histologically resemble tumor cells from the original biopsy specimen.

备注:

1. 人小细胞肺癌细胞 NCI-H146 [H146] 完全培养液 配方 (100 ml) :

RPMI 1640 Medium (Invitrogen, 11875-093)	88 ml
FBS (Gibco)	10 ml
Glutamax (Invitrogen, 35050061)	1 ml
Sodium Pyruvate 100 mM Solution (Invitrogen, 11360070)	1 ml

2. 我库冻存时,每支冻存管约含 7×10^5 细胞量,体积为 $500 \mu\text{l}$,预期存活率 70% ,建议复苏至 1 个 T25 培养瓶中。
3. 该细胞传代时可以通过加入新鲜培养基稀释或者通过离心收集并将细胞重悬浮在新鲜培养基中。

中国科学院典型培养物保藏委员会细胞库/干细胞库