

人慢性髓系白血病细胞 K-562 说明书

目录号: SCSP-5054

细胞名称: K-562

细胞描述: 连续细胞株 K-562 来源于一位临终的 53 岁女性慢性髓性白血病患者的胸水。细胞被归入高度未分化的粒性白细胞类。Anderson 等对其表面膜性质的研究表明, K-562 是一株人类红白血病细胞。K-562 母细胞是多能性, 造血恶性细胞, 它能自发分化成可识别的红血球祖细胞、粒性粒细胞、单核细胞等。Dimery 等将多种 K-562 亚系分为 3 类 (A,B,C), 此株细胞最接近 B 类, 出现费城染色体, 但频次较低, 在 15 个分裂中期检测中未检测到。它是 EBNA 阴性的。

物种: 人, 女性, 53 岁

组织: 骨髓

细胞来源: 2018 年引进

生物安全等级: BSL-1

完全培养液配方: 见下方备注

批次/冻存日期: 详见 冻存管/培养瓶 标识

参考传代比例: 接种密度 1×10^5 cells/mL, 维持密度 $1 \times 10^5 - 1 \times 10^6$ cells/mL.

参考换液频率: 每周 2 次

冻存液配方: 完全培养液 95%, DMSO 5%

或冻存液: 厂商: ZENOAQ, 货号: CellBanker2。

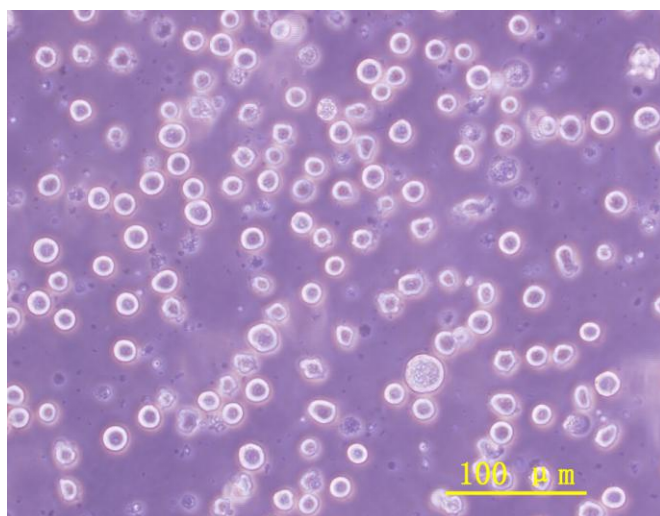
细胞形态: 悬浮生长

支原体检测结果: 阴性

STR 鉴定结果:

Amelogenin: X
CSF1PO: 9,10
D13S317: 8
D16S539: 11,12
D5S818: 11,12
D7S820: 9,11
TH01: 9.3
TPOX: 8,9
vWA: 16

K-562 细胞照片



参考文献:

- Koeffler HP, Golde DW. Human myeloid leukemia cell lines: a review. *Blood* 56: 344-350, 1980. PubMed: [6996765](#)
- Ortaldo JR, et al. Specificity of natural cytotoxic reactivity of normal human lymphocytes against a myeloid leukemia cell line. *J. Natl. Cancer Inst.* 59: 77-82, 1977. PubMed: [69036](#)
- Lozzio CB, Lozzio BB. Human chronic myelogenous leukemia cell-line with positive Philadelphia chromosome. *Blood* 45: 321-334, 1975. PubMed: [163658](#)
- Lozzio BB, Lozzio CB. Properties and usefulness of the original K-562 human myelogenous leukemia cell line. *Leuk. Res.* 3: 363-370, 1979. PubMed: [95026](#)
- Andersson LC, et al. K562--a human erythroleukemic cell line. *Int. J. Cancer* 23: 143-147, 1979. PubMed: [367973](#)
- Lozzio BB, et al. A multipotential leukemia cell line (K-562) of human origin. *Proc. Soc. Exp. Biol. Med.* 166: 546-550, 1981. PubMed: [7194480](#)
- Dimery IW, et al. Variation amongst K562 cell cultures. *Exp. Hematol.* 11: 601-610, 1983. PubMed: [6576909](#)
- Chan YJ, et al. Two distinct upstream regulatory domains containing multicopy cellular transcription factor binding sites provide basal repression and inducible enhancer characteristics to the immediate-early IES (US3) promoter from human cytomegalovirus. *J. Virol.* 70: 5312-5328, 1996. PubMed: [8764042](#)
- Kolanus W, et al. alphaLbeta2 integrin/LFA-1 binding to ICAM-1 induced by cytohesin-1 a cytoplasmic regulatory molecule. *Cell* 86: 233-242, 1996. PubMed: [8706128](#)
- Gan W, Rhoads RE. Internal initiation of translation directed by the 5'-untranslated region of the mRNA for eIF4G, a factor involved in the picornavirus-induced switch from cap-dependent to internal initiation. *J. Biol. Chem.* 271: 623-626, 1996. PubMed: [8557663](#)
- Tiffany HL, et al. Enhanced expression of the eosinophil-derived neurotoxin ribonuclease (RNS2) gene requires interaction between the promoter and intron. *J. Biol. Chem.* 271: 12387-12393, 1996. PubMed: [8647842](#)

Chan YJ, et al. Synergistic interactions between overlapping binding sites for the serum response factor and ELK-1 proteins mediate both basal enhancement and phorbol ester responsiveness of primate cytomegalovirus. *J. Virol.* 70: 8590-8605, 1996. PubMed: [8970984](#)

Nauseef WM, et al. Effect of the R569W missense mutation on the biosynthesis of myeloperoxidase. *J. Biol. Chem.* 271: 9546-9549, 1996. PubMed: [8621627](#)

Grune T, et al. Degradation of oxidized proteins in K562 human hematopoietic cells by proteasome. *J. Biol. Chem.* 271: 15504-15509, 1996. PubMed: [8663134](#)

Jondal M, Pross H. Surface markers on human b and t lymphocytes. VI. Cytotoxicity against cell lines as a functional marker for lymphocyte subpopulations. *Int. J. Cancer* 15: 596-605, 1975. PubMed: [806545](#)

West WH, et al. Natural cytotoxic reactivity of human lymphocytes against a myeloid cell line: characterization of effector cells. *J. Immunol.* 118: 355-361, 1977. PubMed: [299761](#)

Pross HF, et al. Spontaneous human lymphocyte-mediated cytotoxicity against tumor target cells. IX. The quantitation of natural killer cell activity. *J. Clin. Immunol.* 1: 51-63, 1981. PubMed: [7334070](#)

Chen TR. Modal karyotype of human leukemia cell line, K562 (ATCC CCL 243). *Cancer Genet. Cytogenet.* 17: 55-60, 1985. PubMed: [3857109](#)

Wu SQ, et al. Extensive amplification of bcr/abl fusion genes clustered on three marker chromosomes in human leukemic cell line K-562. *Leukemia* 9: 858-862, 1995. PubMed: [7769849](#)

备注:

1. 人慢性髓系白血病细胞 K-562 完全培养液配方 (100 ml) :

IMDM (Invitrogen, 31980-030)	90 ml
------------------------------	-------

FBS (Gibco)	10 ml
-------------	-------

2. 注意事项:

a) 该细胞为悬浮细胞，根据培养经验以及客户的反馈，传代时使用【半换液法】对细胞状态较为有利，因此我库建议您使用【半换液法】进行传代。同时，您在收到细胞后，请不要通过离心的方式收集细胞，可以直接向培养瓶中添加等体积的新鲜培养液，然后将细胞吹打均匀后移入两个新的 T25 培养瓶中继续培养即可。

b) 细胞对血清质量较为敏感，我库建议您使用进口大品牌优质血清进行培养。

c) 该细胞对细胞密度较为敏感，培养、传代时请注意保持细胞密度在合适的范围（具体请参考细胞说明书）。

3. 我库冻存时，每支冻存管约含 1×10^6 细胞量，体积为 $500 \mu\text{l}$ ，预期存活率 70% ，建议复苏至 1 个 T25 培养瓶中。