

人结直肠腺癌细胞 Caco-2 [Caco2]说明书

目录号: SCSP-5027

细胞名称: Caco-2 [Caco2]

细胞描述: 人结直肠腺癌细胞 Caco-2 [Caco2]分离自直肠原位癌, 适于转染。当细胞长满时, 可表现出肠上皮细胞分化的特征。Caco-2 [Caco2]细胞表达维甲酸结合蛋白 I 和维甲酸结合蛋白 II。

物种: 白人, 男性, 72 岁

组织: 结肠

细胞来源: 2017 年引进

生物安全等级: BSL-1

完全培养液配方: 见下方备注

批次/冻存日期: 详见 冻存管/培养瓶 标识

参考传代比例: 1:3

参考传代周期: 4-6 天

参考换液频率: 每周 2-3 次

冻存液配方: 完全培养液 95%, DMSO 5%

细胞形态: 贴壁生长; 细胞形态不均一, 有部分含有液泡的巨大细胞

支原体检测结果: 阴性

STR 鉴定结果:

Amelogenin: X

CSF1PO: 11

D13S317: 11,13,14

D16S539: 12,13

D5S818: 12,13

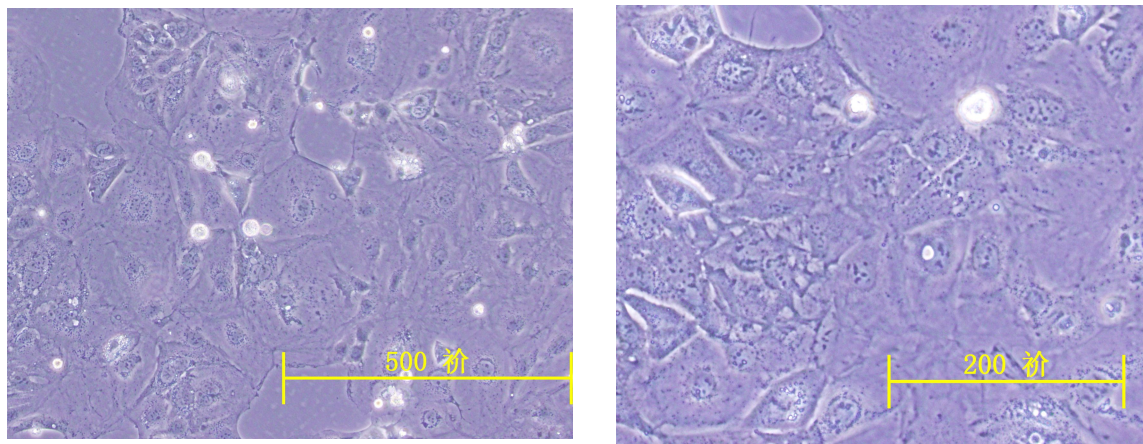
D7S820: 11,12

THO1: 6

TPOX: 9,11

vWA: 16,18

Caco-2 [Caco2]细胞照片



参考文献:

Didier ES, et al. Characterization of *Encephalitozoon (Septata) intestinalis* isolates cultured from nasal mucosa and bronchoalveolar lavage fluids of two AIDS patients. *J. Eukaryot. Microbiol.* 43: 34-43, 1996.

PubMed: [8563708](#)

Jumarie C, Malo C. Caco-2 cells cultured in serum-free medium as a model for the study of enterocytic differentiation in vitro. *J. Cell. Physiol.* 149: 24-33, 1991. PubMed: [1939345](#)

Fogh J, et al. Absence of HeLa cell contamination in 169 cell lines derived from human tumors. *J. Natl. Cancer Inst.* 58: 209-214, 1977. PubMed: [833871](#)

Goodfellow M, et al. One hundred and twenty-seven cultured human tumor cell lines producing tumors in nude mice. *J. Natl. Cancer Inst.* 59: 221-226, 1977. PubMed: [77210034](#)

Adachi A, et al. Productive, persistent infection of human colorectal cell lines with human immunodeficiency virus. *J. Virol.* 61: 209-213, 1987. PubMed: [3640832](#)

Trainer DL, et al. Biological characterization and oncogene expression in human colorectal carcinoma cell lines. *Int. J. Cancer* 41: 287-296, 1988. PubMed: [3338874](#)

Cohen MB, et al. Receptors for *Escherichia coli* heat stable enterotoxin in human intestine and in a human intestinal cell line (Caco-2). *J. Cell. Physiol.* 156: 138-144, 1993. PubMed: [8100232](#)

Basson MD, et al. Effect of tyrosine kinase inhibition on basal and epidermal growth factor-stimulated human Caco-2 enterocyte sheet migration and proliferation. *J. Cell. Physiol.* 160: 491-501, 1994. PubMed: [8077287](#)

Heinen CD, et al. Microsatellite instability in colorectal adenocarcinoma cell lines that have full-length adenomatous polyposis coli protein. *Cancer Res.* 55: 4797-4799, 1995. PubMed: [7585508](#)

Gilbert T, Rodriguez-Boulan E. Induction of vacuolar apical compartments in the Caco-2 intestinal epithelial cell line. *J. Cell Sci.* 100: 451-458, 1991. PubMed: [1808199](#)

Rigothier MC, et al. A new in vitro model of *Entamoeba histolytica* adhesion, using the human colon carcinoma cell line Caco-2: scanning electron microscopic study. *Infect. Immun.* 59: 4142-4146, 1991. PubMed: [1937772](#)

Levin MS. Cellular retinol-binding proteins are determinants of retinol uptake and metabolism in stably transfected Caco-2 cells. *J. Biol. Chem.* 268: 8267-8276, 1993. PubMed: [8463337](#)

Trotter PJ, Storch J. Fatty acid esterification during differentiation of the human intestinal cell line Caco-2. *J. Biol. Chem.* 268: 10017-10023, 1993. PubMed: [8387510](#)

Santoro IM, Groden J. Alternative splicing of the APC gene and its association with terminal differentiation. *Cancer Res.* 57: 488-494, 1997. PubMed: [9012479](#)

White LJ, et al. Attachment and entry of recombinant norwalk virus capsids to cultured human and animal cell lines. *J. Virol.* 70: 6589-6597, 1996. PubMed: [8794293](#)

Baier LJ, et al. A polymorphism in the human intestinal fatty acid binding protein alters fatty acid transport across Caco-2 cells. *J. Biol. Chem.* 271: 10892-10896, 1996. PubMed: [8631905](#)

Kutchera W, et al. Prostaglandin H synthase 2 is expressed abnormally in human colon cancer: evidence for a transcriptional effect. *Proc. Natl. Acad. Sci. USA* 93: 4816-4820, 1996. PubMed: [8643486](#)

Grindstaff KK, et al. Translational regulation of Na,K-ATPase alpha1 and beta1 polypeptide expression in epithelial cells. *J. Biol. Chem.* 271: 23211-23221, 1996. PubMed: [8798517](#)

备注:

1. 人结直肠腺癌细胞 Caco-2 [Caco2]完全培养液配方 (100 ml) :

MEM (Invitrogen, 11090081)	77 ml
FBS (Gibco)	20 ml
Glutamax(Invitrogen, 35050061)	1 ml
Non-essential Amino Acids, 100× (Invitrogen, 11140050)	1 ml
Sodium Pyruvate 100 mM Solution (Invitrogen, 11360070)	1 ml

2. 传代后细胞贴壁较慢, 48h 内不要换液; 细胞形态不均一, 有一些含有液泡的巨大细胞, 属正常现象; 消化时间 5-10 min。

3. 我库冻存时, 每支冻存管约含 1×10^6 细胞量, 体积为 500 μ l, 预期存活率 70%, 建议复苏至 1 个 T25 培养瓶中。