

## 人结肠癌细胞细胞 HT-29 说明书

目录号: SCSP- 5032

细胞名称: HT-29

**细胞描述:** HT-29 细胞表达尿激酶受体, 但未检测到纤溶酶原激活物活性[PubMed ID:8381394]。HT-29 细胞 CD4 表达阴性, 但细胞表面表达半乳糖神经酰胺(一个 HIV 的可替代受体)。致癌基因 c-myc, K-ras, H-ras, N-ras, Myb, sis, fos 表达阳性, 过量产生 p53 抗原, 在 p53 基因的 273 密码子处有 G -> A 突变导致 Arg -> His 替换, 未检测到致癌基因 N-myc 的表达。

**物种:** 白人, 女性, 44 岁

**组织:** 结肠

**细胞来源:** 2017 年引进

**生物安全等级:** BSL-1

**完全培养液配方:** 见下方备注

**批次/冻存日期:** 详见 冻存管/培养瓶 标识

**建议传代比例:** 1:3

**建议传代周期:** 3-4 天

**建议换液频率:** 每周 2 次

**冻存液配方:** 完全培养液 95%, DMSO 5%

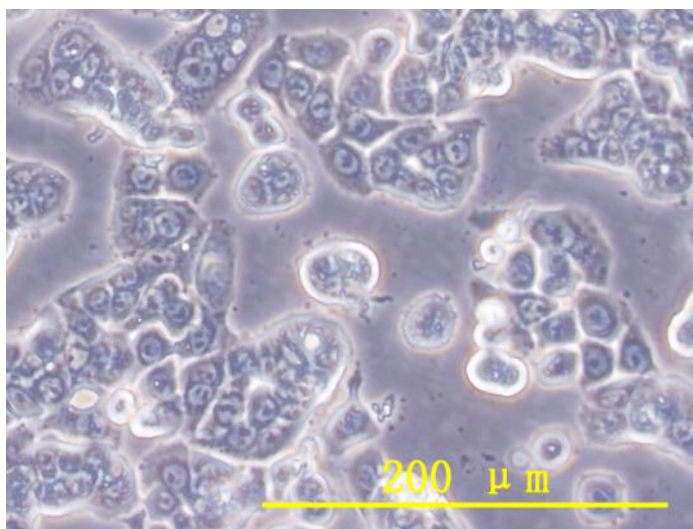
**细胞形态:** 贴壁生长

**支原体检测结果:** 阴性

**STR 鉴定结果:**

D5S818: 11,12  
D13S317: 11,12  
D7S820: 10  
D16S539: 11,12  
vWA: 17,19  
THO1: 6,9  
Amelogenin: X  
TPOX: 8,9  
CSF1PO: 11,12

## HT-29 细胞照片



## 参考文献:

Didier ES, et al. Characterization of Encephalitozoon (Septata) intestinalis isolates cultured from nasal mucosa and bronchoalveolar lavage fluids of two AIDS patients. *J. Eukaryot. Microbiol.* 43: 34-43, 1996. PubMed: [8563708](#)

Fogh J. *Human tumor cells in vitro*. New York: Plenum Press; 1975.

Chen TR, et al. WiDr is a derivative of another colon adenocarcinoma cell line, HT-29. *Cancer Genet. Cytogenet.* 27: 125-134, 1987. PubMed: [3472642](#)

Fogh J, et al. Absence of HeLa cell contamination in 169 cell lines derived from human tumors. *J. Natl. Cancer Inst.* 58: 209-214, 1977. PubMed: [833871](#)

Goodfellow M, et al. One hundred and twenty-seven cultured human tumor cell lines producing tumors in nude mice. *J. Natl. Cancer Inst.* 59: 221-226, 1977. PubMed: [77210034](#)

Adachi A, et al. Productive, persistent infection of human colorectal cell lines with human immunodeficiency virus. *J. Virol.* 61: 209-213, 1987. PubMed: [3640832](#)

Fantini J, et al. Human colon epithelial cells productively infected with human immunodeficiency virus show impaired differentiation and altered secretion. *J. Virol.* 66: 580-585, 1992. PubMed: [1727501](#)

Butzow R, et al. A 60-kD protein mediates the binding of transforming growth factor-beta to cell surface and extracellular matrix proteoglycans. *J. Cell Biol.* 122: 721-727, 1993. PubMed: [8335695](#)

Trainer DL, et al. Biological characterization and oncogene expression in human colorectal carcinoma cell lines. *Int. J. Cancer* 41: 287-296, 1988. PubMed: [3338874](#)

Hanski C, et al. Tumorigenicity, mucin production and AM-3 epitope expression in clones selected from the HT-29 colon carcinoma cell line. *Int. J. Cancer* 50: 924-929, 1992. PubMed: [1372882](#)

Reiter LS, et al. The role of the urokinase receptor in extracellular matrix degradation by HT29 human colon carcinoma cells. *Int. J. Cancer* 53: 444-450, 1993. PubMed: [8381394](#)

Barnett SW, et al. Characterization of human immunodeficiency virus type 1 strains recovered from the bowel of infected individuals. *Virology* 182: 802-809, 1991. PubMed: [2024498](#)

Shabahang M, et al. 1,25-Dihydroxyvitamin D3 receptor as a marker of human colon carcinoma cell line differentiation and growth inhibition. *Cancer Res.* 53: 3712-3718, 1993. PubMed: [8393379](#)

Lesuffleur T, et al. Differential expression of the human mucin genes MUC1 to MUC5 in relation to growth

and differentiation of different mucus-secreting HT-29 cell subpopulations. *J. Cell Sci.* 106: 771-778, 1993. PubMed: [8308060](#)

Pollack MS, et al. HLA-A, B, C and DR alloantigen expression on forty-six cultured human tumor cell lines. *J. Natl. Cancer Inst.* 66: 1003-1012, 1981. PubMed: [7017212](#)

Fantini J, et al. Infection of colonic epithelial cell lines by type 1 human immunodeficiency virus is associated with cell surface expression of galactosylceramide, a potential alternative gp120 receptor. *Proc. Natl. Acad. Sci. USA* 90: 2700-2704, 1993. PubMed: [8464878](#)

Devedjian JC, et al. Regulation of the alpha 2A-adrenergic receptor in the HT29 cell line. Effects of insulin and growth factors. *J. Biol. Chem.* 266: 14359-14366, 1991. PubMed: [1677644](#)

Santoro IM, Groden J. Alternative splicing of the APC gene and its association with terminal differentiation. *Cancer Res.* 57: 488-494, 1997. PubMed: [9012479](#)

Bermudez LE, et al. Exposure to low oxygen tension and increased osmolarity enhance the ability of *Mycobacterium avium* to enter intestinal epithelial (HT-29) cells. *Infect. Immun.* 65: 3768-3773, 1997. PubMed: [9284150](#)

Tsao H, et al. Novel mutations in the p16/CDKN2A binding region of the Cyclin-dependent Kinase-4 gene. *Cancer Res.* 58: 109-113, 1998. PubMed: [9426066](#)

Qian XC, Brent TP. Methylation hot spots in the 5' flanking region denote silencing of the O6-methylguanine-DNA methyltransferase gene. *Cancer Res.* 57: 3672-3677, 1997. PubMed: [9288770](#)

Morin PJ, et al. Apoptosis and APC in colorectal tumorigenesis. *Proc. Natl. Acad. Sci. USA* 93: 7950-7954, 1996. PubMed: [8755583](#)

White LJ, et al. Attachment and entry of recombinant norwalk virus capsids to cultured human and animal cell lines. *J. Virol.* 70: 6589-6597, 1996. PubMed: [8794293](#)

Kolanus W, et al. alphaLbeta2 integrin/LFA-1 binding to ICAM-1 induced by cytohesin-1 a cytoplasmic regulatory molecule. *Cell* 86: 233-242, 1996. PubMed: [8706128](#)

Wang R, et al. Cellular adherence elicits ligand-independent activation of the Met cell-surface receptor. *Proc. Natl. Acad. Sci. USA* 93: 8425-8430, 1996. PubMed: [8710887](#)

Young SW, et al. Gadolinium(III) texaphyrin: a tumor selective radiation sensitizer that is detectable by MRI. *Proc. Natl. Acad. Sci. USA* 93: 6610-6615, 1996. PubMed: [8692865](#)

Groh V, et al. Cell stress-regulated human major histocompatibility complex class I gene expressed in gastrointestinal epithelium. *Proc. Natl. Acad. Sci. USA* 93: 12445-12450, 1996. PubMed: [8901601](#)

Takahashi K, et al. Keratan sulfate modification of CD44 modulates adhesion to hyaluronate. *J. Biol. Chem.* 271: 9490-9496, 1996. PubMed: [8621620](#)

## 备注:

### 1. 人结肠癌细胞细胞 HT-29 完全培养液配方 (100 ml) :

McCoy's 5a Medium (Invitrogen, 12330-031)	90 ml
FBS (Gibco)	10 ml

### 2. 注意事项:

a. HT-29 复苏后第一周可能会有大量漂浮细胞, 可更换新鲜培养液, 同时将漂浮的细胞离心收集后加回到培养瓶中与贴壁细胞共同培养。新复苏的细胞会以补丁形态三维接触生长(即

不是单层扁平生长)，待细胞分裂生长后将会变回上皮细胞形态单层扁平生长。

b. 我库冻存时，每支冻存管约含  $7 \times 10^5$  细胞量，体积为  $500 \mu\text{l}$ ，预期存活率  $70\%$ ，建议复苏至 1 个 T25 培养瓶中。

中国科学院典型培养物保藏委员会细胞库/干细胞库