

## 小鼠成纤维细胞 NCTC clone 929 [L cell, L-929, derivative of Strain L]

### 说明书

中国科学院干细胞库编号：SCSP- 5039

细胞名称：NCTC clone 929 [L cell, L-929, derivative of Strain L]

细胞描述：这株细胞的母细胞系-L 细胞系取自 100 天的 C3H/An 小鼠的正常皮下乳晕和脂肪组织。NCTC clone 929 建立于 1948 年 3 月。L 细胞系是最早建立的连续培养的细胞系之一，而 NCTC clone 929 是最早的克隆株。

物种：小鼠

细胞来源：2018 年引进

ATCC number：CCL-1™

生物安全等级：BSL-1

完全培养液配方：见下方备注

批次/冻存日期：详见 冻存管/培养瓶 标识

参考传代周期：3-4 天

参考传代比例：1:2-1:8

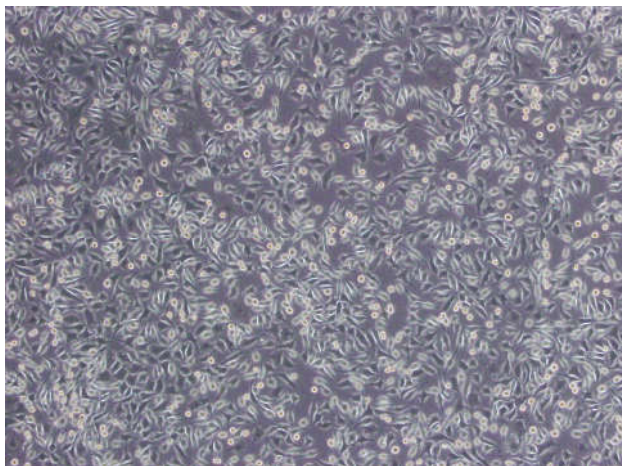
参考换液频率：2-3 天

冻存液配方：完全培养液 95%，DMSO 5%

细胞状态：成纤维细胞，贴壁生长

支原体检测结果：阴性

### NCTC clone 929 [L cell, L-929, derivative of Strain L]细胞照片



**参考文献:**

- Kazazian HH Jr., et al. Restriction site polymorphism in the phosphoglycerate kinase gene on the X chromosome. Hum. Genet. 66: 217-219, 1984. PubMed: [6325324](#)
- Fisher EM, et al. Homologous ribosomal protein genes on the human X and Y chromosomes: escape from X inactivation and possible implications for Turner syndrome. Cell 63: 1205-1218, 1990. PubMed: [2124517](#)
- Sanford KK, et al. The growth in vitro of single isolated tissue cells. J. Natl. Cancer Inst. 9: 229-246, 1948.
- Sugarman BJ, et al. Recombinant human tumor necrosis factor-alpha: effects on proliferation of normal and transformed cells in vitro. Science 230: 943-945, 1985. PubMed: [3933111](#)
- ASTM International Standard Practice for Direct Contact Cell Culture Evaluation of Materials for Medical Devices. West Conshohocken, PA:ASTM International;ASTM Standard Test Method F 0813-07.
- ASTM International Standard Test Method for Agar Diffusion Cell Culture Screening for Cytotoxicity. West Conshohocken, PA:ASTM International;ASTM Standard Test Method F 0895-84 (Reapproved 2006).
- U.S. Pharmacopeia General Chapters: <87> Biological Reactivity Tests, in vitro. Rockville, MD: U.S. Pharmacopeia; USP USP34-NF29, 2011
- Westfall BB, et al. The glycogen content of cell suspensions prepared from massive tissue culture: comparison of cells derived from mouse connective tissue and mouse liver. J. Natl. Cancer Inst. 14: 655-664, 1953. PubMed: [13233820](#)
- Earle WR, et al. Production of malignancy in vitro. IV. The mouse fibroblast cultures and changes seen in the living cells. J. Natl. Cancer Inst. 4: 165-212, 1943.
- Earle WR, et al. The influence of inoculum size on proliferation in tissue cultures. J. Natl. Cancer Inst. 12: 133-153, 1951. PubMed: [14874126](#)
- Sanford KK, et al. The tumor-producing capacity of strain L mouse cells after 10 years in vitro. Cancer Res. 16: 162-166, 1956. PubMed: [13293658](#)
- Westfall BB, et al. The arginase and rhodanese activities of certain cell strains after long cultivation in vitro. J. Biophys. Biochem. Cytol. 4: 567-570, 1958. PubMed: [13587550](#)
- Papkoff J. Regulation of complexed and free catenin pools by distinct mechanisms. J. Biol. Chem. 272: 4536-4543, 1997. PubMed: [9020180](#)
- Hu SX, et al. Development of an adenovirus vector with tetracycline-regulatable human tumor necrosis factor alpha gene expression. Cancer Res. 57: 3339-3343, 1997. PubMed: [9269991](#)
- Yasin B, et al. Susceptibility of Chlamydia trachomatis to protegrins and defensins. Infect. Immun. 64: 709-713, 1996. PubMed: [8641770](#)
- Biological evaluation of medical devices. Part 5: Tests for in vitro cytotoxicity. Sydney, NSW, Australia:Standards Australia;Standards Australia AS ISO 10993.5-2002.
- Plastics collapsible containers for human blood and blood components--Part 1: Conventional containers. Annex C. Biological tests.. Geneva (Switzerland):International Organization for Standardization/ANSI;ISO ISO 3826-1:2003.
- Dentistry--Preclinical evaluation of biocompatibility of medical devices used in dentistry--Test methods for dental materials. Geneva (Switzerland):International Organization for Standardization/ANSI;ISO ISO 7405:1997.
- Biological evaluation of medical devices--Part 5: Tests for in vitro cytotoxicity. Geneva (Switzerland):International Organization for Standardization/ANSI;ISO ISO 10993-5:1999.
- Plastic containers for intravenous injection. Geneva (Switzerland):International Organization for Standardization/ANSI;ISO ISO 15747:2003.

**备注:**

1. 小鼠成纤维细胞 NCTC clone 929 [L cell, L-929, derivative of Strain L]完全培养液配方 (100 ml):

MEM (Invitrogen, 11090-081)	87 ml
Glutamax (invitrogen, 35050061)	1 ml
Non-essential Amino Acids, 100× (invitrogen, 11140050)	1 ml
Sodium Pyruvate (invitrogen, 11360070)	1 ml
<b>heat-inactivated horse</b> serum (Gibco, 26050-070)	10 ml

2. 我库冻存时, 每支冻存管约含  $1 \times 10^6$  细胞量, 体积为 500  $\mu$ l, 预期存活率 70%, 建议复苏至 1 个 T25 培养瓶中。

详情访问中科院干细胞库/干细胞技术平台 <http://www.cellbank.com.cn/index.asp>;

电话: 021-54921358

感谢您选择我们的服务!

中国科学院干细胞库/干细胞技术平台