

人肺癌细胞 NCI-H23 说明书

中国科学院干细胞库编号: SCSP-581

细胞名称: NCI-H23

细胞描述: 人非小细胞肺癌细胞, 分离自 51 岁黑人男性肺癌患者治疗前的肺癌组织, 携带 K-ras 12 突变, 突变位于 p53 基因的 246 密码子位置, (ATC -> ATG, isoleucine -> methionine). 表达 C-myc, L-myc, v-src, v-abl, v-erb B, c-raf 1, Ha-ras, Ki-ras, N-ras RNAs。

物种: 人

细胞来源: 2016 年引进

ATCC number: CRL-5800™

培养液: 配方见备注

细胞总数: 1×10^6

体积/每支: 500ul

预期存活率: 70%

冻存日期: 详见 冻存管/培养瓶 标识

建议复苏培养体系: T25 培养瓶

传代周期: 每周 2 次

传代比例: 1:2-1:3

换液频率: 每周 2-3 次

冻存液: 培养液 95%, DMSO 5%

细胞状态: 贴壁

支原体检测结果: 阴性

备注:

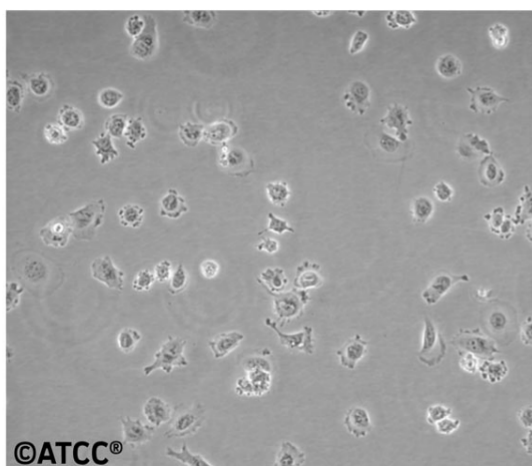
1. 人肺癌细胞 NCI- H23 完全培养液配方 (100 ml):

RPMI 1640 Medium (Invitrogen, 11875-093)	88 ml
FBS (Gibco)	10 ml
Glutamax (invitrogen 35050)	1 ml
Sodium Pyruvate 100 mM Solution (invitrogen 11360070)	1 ml

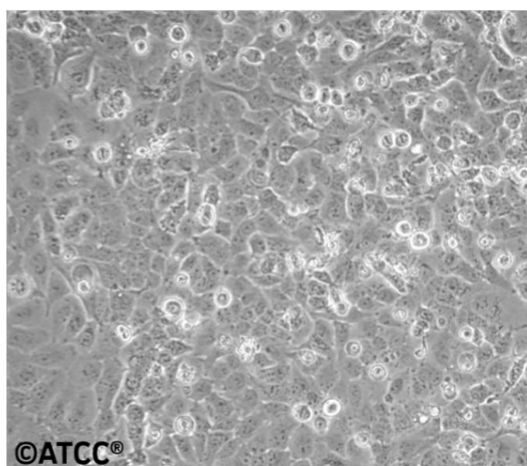
人肺癌细胞 NCI- H23

ATCC Number: **CRL-5800**

Designation: **NCI-H23 [H23]**



Low Density



High Density

参考文献:

Little CD, et al. Amplification and expression of the c-myc oncogene in human lung cancer cell lines. *Nature* 306: 194-196, 1983. PubMed: [6646201](#)

Takahashi T, et al. p53: A frequent target for genetic abnormalities in lung cancer. *Science* 246: 491-494, 1989. PubMed: [2554494](#)

Mitsudomi T, et al. p53 gene mutations in non-small-cell lung cancer cell lines and their correlation with the presence of ras mutations and clinical features. *Oncogene* 7: 171-180, 1992. PubMed: [1311061](#)

Brower M, et al. Growth of cell lines and clinical specimens of human non-small cell lung cancer in a serum-free defined medium. *Cancer Res.* 46: 798-806, 1986. PubMed: [3940644](#)

Broers JL, et al. Spontaneous changes in intermediate filament protein expression patterns in lung cancer cell lines. *J. Cell Sci.* 91: 91-108, 1988. PubMed: [2473086](#)

Forsberg K, et al. Expression of functional PDGF beta receptors in a human large-cell lung- carcinoma cell line. *Int. J. Cancer* 53: 556-560, 1993. PubMed: [8382192](#)

Gazdar AF, et al. Establishment of continuous, clonable cultures of small-cell carcinoma of lung which have amine precursor uptake and decarboxylation cell properties. *Cancer Res.* 40: 3502-3507, 1980. PubMed: [6108156](#)

NCI-Navy Medical Oncology Branch Cell Line Supplement. *J. Cell. Biochem. suppl.* 24: 1996.

Lung Cancer 4: 155-161, 1988.

详情访问中科院干细胞库/干细胞技术平台 <http://www.cellbank.com.cn/index.asp>;

电话: 021-54921358

感谢您选择我们的服务!

中国科学院干细胞库/干细胞研究平台